

CAL. 6-3, SIERRA PLAZA

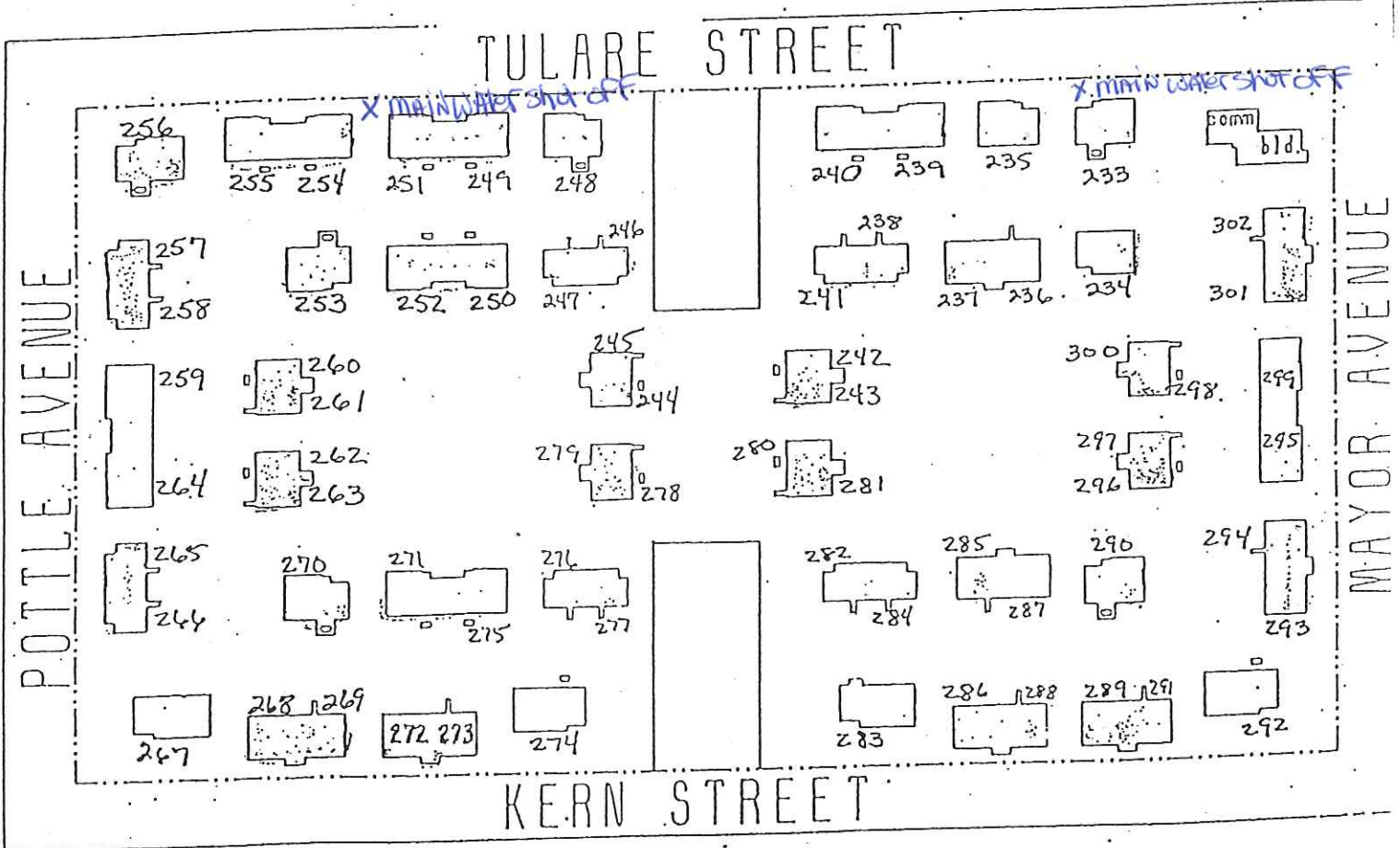
70 Units (233 - 302)
 Constructed 1942
 12 Bldgs. w/1 unit/bldg.
 29 Bldgs. w/2 units/bldg.

Unit # is Identifier
 1 Community Bldg.
 Int. Asphalt Roadway - 8,020 Sq. Ft.
 Int. Concrete Sidewalk - 36,440 Sq. Ft.

Ext. Concrete Sidewalk - 4,104 Sq. Ft.
 Int. Parking - 68,796 Sq. Ft.

UNIT	ADDRESS	UNIT	ADDRESS	UNIT	ADDRESS
233	838 Tulare (3)	257	948 Pottle (1)	281	821 Kern (2)
234	840 Tulare (3)	258	942 Pottle (1)	282	817 Kern (1)
235	832 Tulare (3)	259	936 Pottle (4)	283	815 Kern (4)
236	830 Tulare (2)	260	940 Pottle (2)	284	819 Kern (1)
237	828 Tulare (2)	261	938 Pottle (2)	285	827 Kern (2)
238	820 Tulare (1)	262	934 Pottle (2)	286	825 Kern (2)
239	826 Tulare (3)	263	932 Pottle (2)	287	829 Kern (2)
240	816 Tulare (3)	264	930 Pottle (4)	288	831 Kern (2)
241	818 Tulare (1)	265	920 Pottle (1)	289	837 Kern (2)
242	822 Tulare (2)	266	914 Pottle (1)	290	839 Kern (3)
243	824 Tulare (2)	267	709 Kern (4)	291	841 Kern (2)
244	754 Tulare (2)	268	719 Kern (2)	292	853 Kern (4)
245	752 Tulare (2)	269	723 Kern (2)	293	915 Mayor (2)
246	750 Tulare (1)	270	721 Kern (3)	294	921 Mayor (2)
247	748 Tulare (1)	271	731 Kern (3)	295	931 Mayor (4)
248	746 Tulare (3)	272	729 Kern (2)	296	933 Mayor (2)
249	736 Tulare (3)	273	735 Kern (2)	297	935 Mayor (2)
250	734 Tulare (3)	274	745 Kern (4)	298	939 Mayor (2)
251	730 Tulare (3)	275	733 Kern (3)	299	937 Mayor (4)
252	732 Tulare (3)	276	747 Kern (1)	300	941 Mayor (2)
253	722 Tulare (3)	277	749 Kern (1)	301	943 Mayor (2)
254	724 Tulare (3)	278	751 Kern (2)	302	949 Mayor (2)
255	720 Tulare (3)	279	753 Kern (2)		
256	710 Tulare (3)	280	823 Kern (2)		

1 Bdrm. - 12
2 Bdrm. - 32
3 Bdrm. - 18
4 Bdrm. - 8
5 Bdrm. - 0



CAL. 6-4, Fairview Heights Terrace

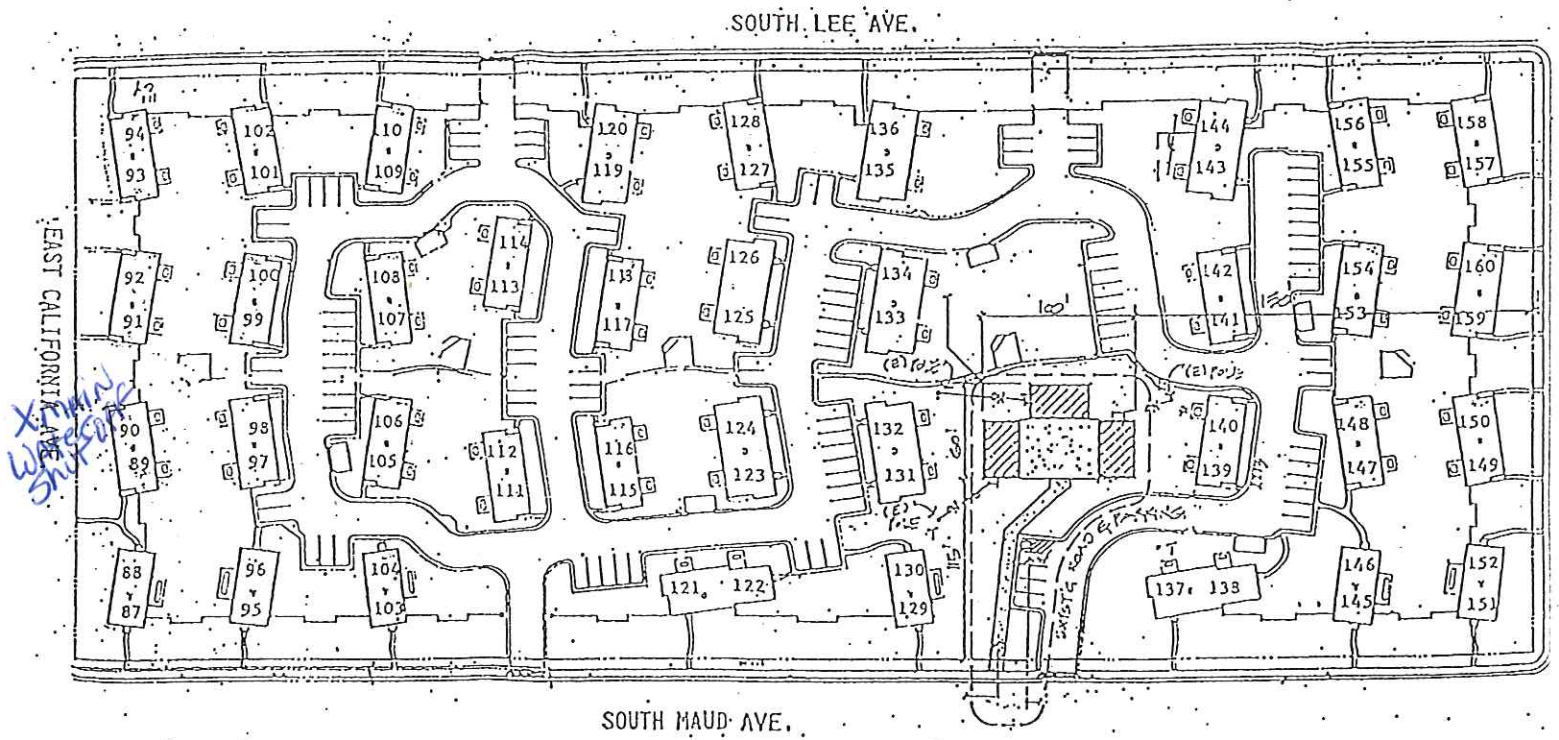
74 Units (87 - 160)
36 bldgs. w/2 units/bldg.
Int. Concrete Sidewalk - 5,380 Sq. Ft.

Constructed 1952 Unit # is Identifier
Family Investment Center - Units 139 and 140
Ext. Concrete Sidewalk - 4,153 Sq. Ft.

2 bldgs. w/1 unit/bldg.
Int. Asphalt Roadway - 56,850 Sq. Ft
Int. Parking - 23,989 Sq. Ft.

<u>UNIT</u>	<u>ADDRESS</u>	<u>UNIT</u>	<u>ADDRESS</u>	<u>UNIT</u>	<u>ADDRESS</u>
87	704 E. California (1)	112	2135 S. Maud (2)	137	2207 S. Maud (4)
88	706 E. California (1)	113	2136 S. Lee (2)	138	2209 S. Maud (1)
89	720 E. California (2)	114	2134 S. Lee (2)	139	2213 S. Maud (2)
90	722 E. California (2)	115	2145 S. Maud (2)	140	2215 S. Maud (2)
91	732 E. California (2)	116	2147 S. Maud (2)	141	2216 S. Lee (2)
92	734 E. California (2)	117	2148 S. Lee (2)	142	2214 S. Lee (2)
93	740 E. California (2)	118	2146 S. Lee (2)	143	2210 S. Lee (3)
94	742 E. California (2)	119	2142 S. Lee (3)	144	2208 S. Lee (3)
95	2109 S. Maud (1)	120	2140 S. Lee (3)	145	2221 S. Maud (1)
96	2111 S. Maud (1)	121	2153 S. Maud (4)	146	2223 S. Maud (1)
97	2115 S. Maud (2)	122	2155 S. Maud (1)	147	2229 S. Maud (2)
98	2117 S. Maud (2)	123	2161 S. Maud (3)	148	2231 S. Maud (2)
99	2118 S. Lee (2)	124	2163 S. Maud (3)	149	723 E. Geary (2)
100	2116 S. Lee (2)	125	2164 S. Lee (3)	150	721 E. Geary (2)
101	2112 S. Lee (2)	126	2162 S. Lee (3)	151	707 E. Geary (1)
102	2110 S. Lee (2)	127	2158 S. Lee (2)	152	705 E. Geary (1)
103	2121 S. Maud (1)	128	2156 S. Lee (2)	153	2232 S. Lee (2)
104	2123 S. Maud (1)	129	2179 S. Maud (1)	154	2230 S. Lee (2)
105	2127 S. Maud (2)	130	2181 S. Maud (1)	155	2224 S. Lee (2)
106	2129 S. Maud (2)	131	2187 S. Maud (3)	156	2222 S. Lee (2)
107	2130 S. Lee (2)	132	2189 S. Maud (3)	157	743 E. Geary (2)
108	2128 S. Lee (2)	133	2190 S. Lee (3)	158	741 E. Geary (2)
109	2124 S. Lee (2)	134	2188 S. Lee (3)	159	735 E. Geary (2)
110	2122 S. Lee (2)	135	2182 S. Lee (3)	160	733 E. Geary (2)
111	2133 S. Maud (2)	136	2180 S. Lee (3)		

1 Bdrm. - 14	2 Bdrm. - 44	3 Bdrm. - 14	4 Bdrm. - 2	5 Bdrm. - 0
--------------	--------------	--------------	-------------	-------------



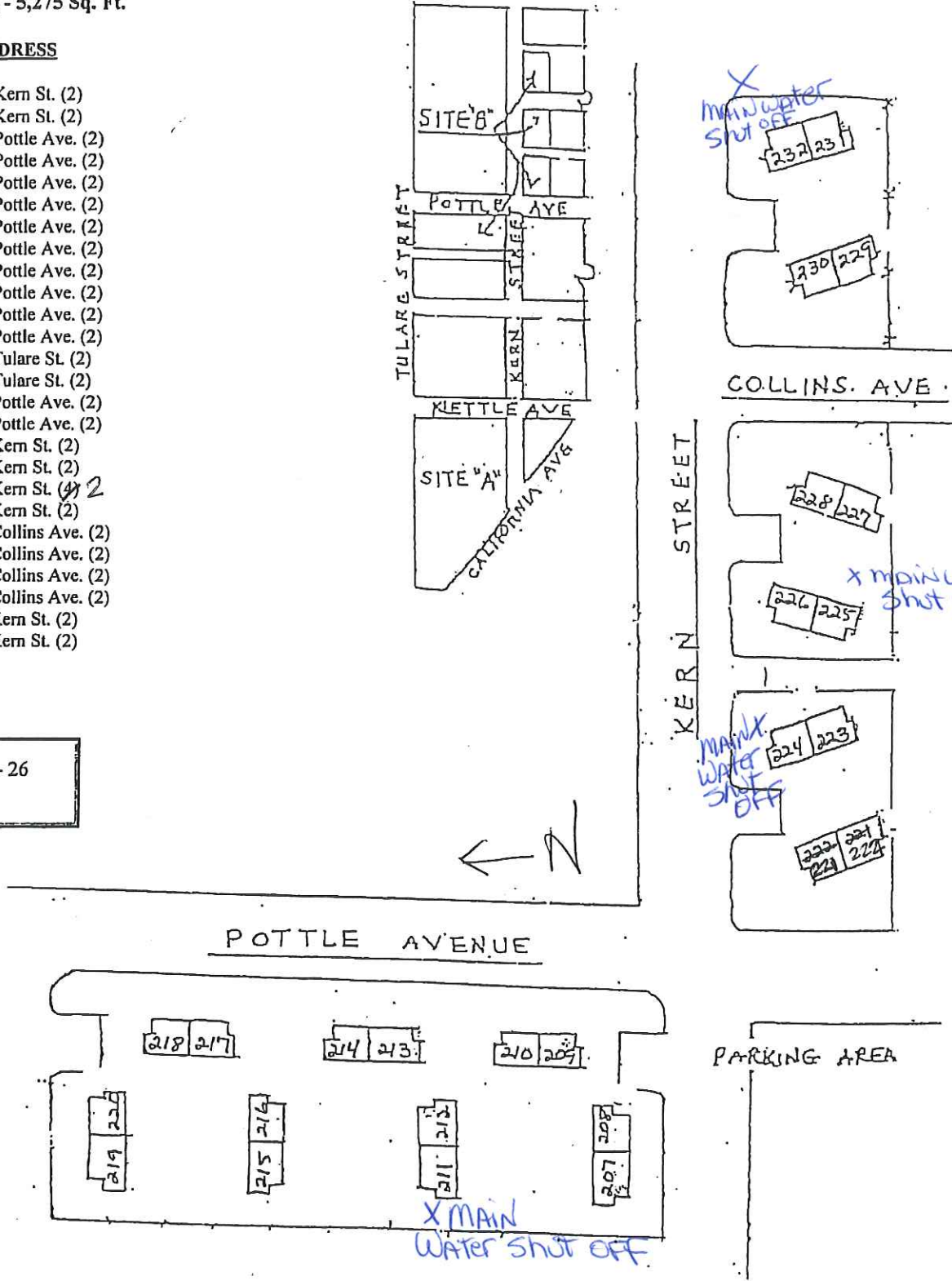
CAL. 6-6, Sierra Terrace (Lower)

26 Units (207 - 232)
 Constructed 1952
 Unit # is Identifier
 13 bldgs. w/2 units/bldg.
 Int. Concrete Sidewalk - 1,596 Sq. Ft.
 Ext. Concrete Sidewalk - 1,280 Sq. Ft.
 Int. Parking - 6,400 Sq. Ft.
 Ext. Parking - 5,275 Sq. Ft.

ZIP: 93706

UNIT	ADDRESS
207	631 Kern St. (2)
208	635 Kern St. (2)
209	913 Pottle Ave. (2)
210	919 Pottle Ave. (2)
211	925 Pottle Ave. (2)
212	921 Pottle Ave. (2)
213	929 Pottle Ave. (2)
214	935 Pottle Ave. (2)
215	939 Pottle Ave. (2)
216	937 Pottle Ave. (2)
217	941 Pottle Ave. (2)
218	947 Pottle Ave. (2)
219	632 Tulare St. (2)
220	636 Tulare St. (2)
221	860 Pottle Ave. (2)
222	862 Pottle Ave. (2)
223	732 Kern St. (2)
224	730 Kern St. (2)
225	740 Kern St. (2)
226	738 Kern St. (2)
227	857 Collins Ave. (2)
228	861 Collins Ave. (2)
229	856 Collins Ave. (2)
230	860 Collins Ave. (2)
231	830 Kern St. (2)
232	828 Kern St. (2)

2 Bdrm. - 26



CAL 6-26 (suffix -09)

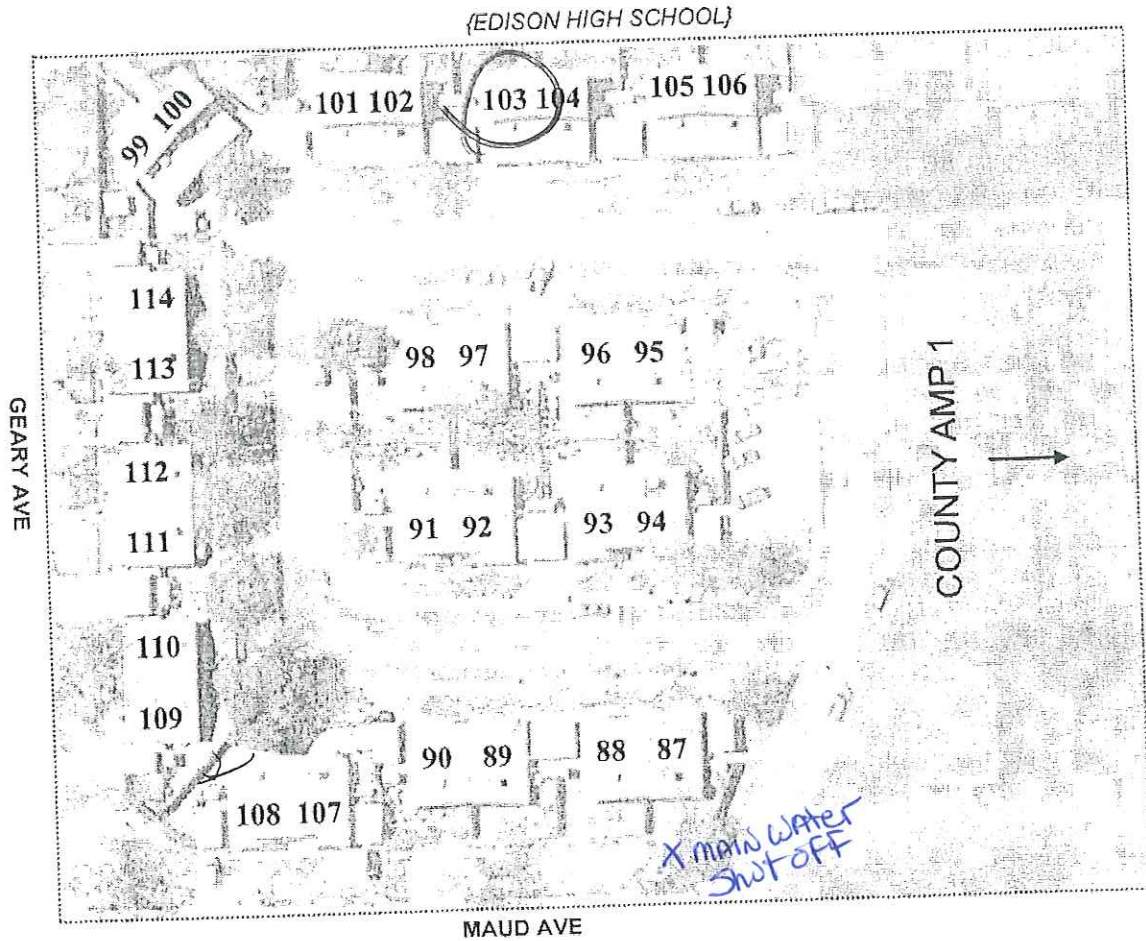
DESOTO GARDENS

28 UNITS
 Zip Code: 93706
 Constructed 1994
 14 bldgs (2 units/bldg)
 Unit 114: Police Unit

4-bd units are 2-story & have 2 bathrooms

Evaporative Cooling / Wall heaters
 (ducting throughout unit)

interior asphalt roadway—2,360 ft²
 interior concrete sidewalk—12,255 ft²
 exterior concrete sidewalk—837 ft²
 interior parking—13,448 ft²



UNIT	ADDRESS (BD)
87	640 E CALIFORNIA AVE APT 141 (3)
88	640 E CALIFORNIA AVE APT 142 (3)
89	640 E CALIFORNIA AVE APT 143 (3)
90	640 E CALIFORNIA AVE APT 144 (3)
91	640 E CALIFORNIA AVE APT 145 (3)
92	640 E CALIFORNIA AVE APT 146 (3)
93	640 E CALIFORNIA AVE APT 147 (3)
94	640 E CALIFORNIA AVE APT 148 (3)
95	640 E CALIFORNIA AVE APT 149 (3)
96	640 E CALIFORNIA AVE APT 150 (3)
97	640 E CALIFORNIA AVE APT 151 (3)
98	640 E CALIFORNIA AVE APT 152 (3)

UNIT	ADDRESS (BD)
99	640 E CALIFORNIA AVE APT 153 (4)
100	640 E CALIFORNIA AVE APT 154 (4)
101	640 E CALIFORNIA AVE APT 155 (4)
102	640 E CALIFORNIA AVE APT 156 (4)
103	640 E CALIFORNIA AVE APT 157 (4)
104	640 E CALIFORNIA AVE APT 158 (4)
105	640 E CALIFORNIA AVE APT 159 (4)
106	640 E CALIFORNIA AVE APT 160 (4)
107 HC	640 E CALIFORNIA AVE APT 161 (3)
108 HC	640 E CALIFORNIA AVE APT 162 (3)

UNIT	ADDRESS [APT ID] (BD)
109	619 E GEARY ST [163] (3)
110	617 E GEARY ST [164] (3)
111	615 E GEARY ST [165] (3)
112	613 E GEARY ST [166] (3)
113	611 E GEARY ST [167] (3)
114	609 E GEARY ST [168] (3)

N →
 (to California Ave)

3-bd: 18 4-bd: 6 = 78 bdrms

CAL. 28-38

DeSoto Gardens - Fresno

40 Units (47 - 86)
 Constructed 1990
 20 Bldgs. w/2 units/bldg.
 Unit # is identifier
 Handicap Units: 83, 84, 85 & 86

Sidewalks - 4,952 Sq. Ft.
 Parking Area - 8,626 Sq. Ft.

1 Bdrm. - 0
2 Bdrm. - 0
3 Bdrm. - 29
4 Bdrm. - 11

See 6/26 for other half of complex

UNIT	ADDRESS
47	640 E. Calif. Ave., #101 (3)
48	640 E. Calif. Ave., #102 (3)
49	640 E. Calif. Ave., #103 (3)
50	640 E. Calif. Ave., #104 (3)
51	640 E. Calif. Ave., #105 (3)
52	640 E. Calif. Ave., #106 (3)
53	640 E. Calif. Ave., #107 (3)
54	640 E. Calif. Ave., #108 (3)
55	640 E. Calif. Ave., #109 (3)
56	640 E. Calif. Ave., #110 (3)
57	640 E. Calif. Ave., #111 (3)
58	640 E. Calif. Ave., #112 (3)
59	640 E. Calif. Ave., #113 (4)
60	640 E. Calif. Ave., #114 (4)
61	640 E. Calif. Ave., #115 (4)
62	640 E. Calif. Ave., #116 (4)
63	640 E. Calif. Ave., #117 (4)
64	640 E. Calif. Ave., #118 (4)
65	640 E. Calif. Ave., #119 (3)
66	640 E. Calif. Ave., #120 (3)
67	640 E. Calif. Ave., #121 (3)
68	640 E. Calif. Ave., #122 (3)
69	640 E. Calif. Ave., #123 (3)
70	640 E. Calif. Ave., #124 (3)
71	640 E. Calif. Ave., #125 (3)
72	640 E. Calif. Ave., #126 (3)
73	640 E. Calif. Ave., #127 (4)
74	640 E. Calif. Ave., #128 (4)
75	640 E. Calif. Ave., #129 (4)
76	640 E. Calif. Ave., #130 (4)
77	640 E. Calif. Ave., #131 (4)
78	640 E. Calif. Ave., #132 (3)
79	640 E. Calif. Ave., #133 (3)
80	640 E. Calif. Ave., #134 (3)
81	640 E. Calif. Ave., #135 (3)
82	640 E. Calif. Ave., #136 (3)
83	640 E. Calif. Ave., #137 (3)
84	640 E. Calif. Ave., #138 (3)
85	640 E. Calif. Ave., #139 (3)
86	640 E. Calif. Ave., #140 (3)

