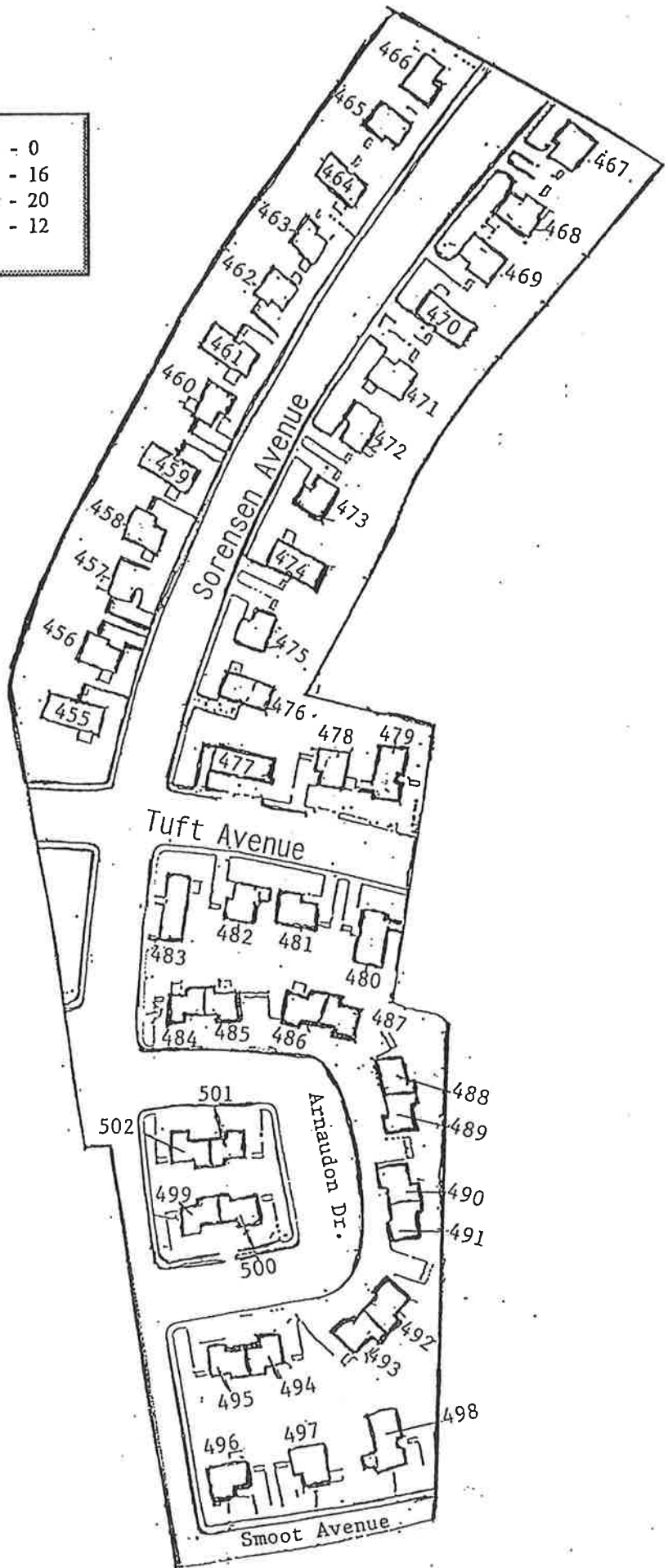


Mendota Rad 613012

48 Units (455 - 502)
 Constructed 1971
 8 Bldgs. w/2 units/bldg.
 32 Bldgs. w/1 unit/bldg.
 Unit # is identifier
 Sidewalks - 6,140 Sq. Ft.
 Parking Area - 41,336 Sq. Ft.

1 Bdrm. - 0
2 Bdrm. - 16
3 Bdrm. - 20
4 Bdrm. - 12

<u>UNIT</u>	<u>ADDRESS</u>
455	515 Sorensen Ave. (4)
456	523 Sorensen Ave. (3)
457	531 Sorensen Ave. (3)
458	535 Sorensen Ave. (3)
459	539 Sorensen Ave.(4)
460	547 Sorensen Ave. (3)
461	555 Sorensen Ave. (4)
462	563 Sorensen Ave. (3)
463	565 Sorensen Ave. (3)
464	571 Sorensen Ave. (4)
465	579 Sorensen Ave. (3)
466	595 Sorensen Ave. (3)
467	594 Sorensen Ave. (3)
468	586 Sorensen Ave. (3)
469	578 Sorensen Ave. (3)
470	570 Sorensen Ave. (4)
471	562 Sorensen Ave. (3)
472	554 Sorensen Ave. (3)
473	546 Sorensen Ave. (3)
474	538 Sorensen Ave. (4)
475	530 Sorensen Ave. (3)
476	522 Sorensen Ave. (4)
477	201 Tuft Ave. (5)
478	209 Tuft Ave. (3)
479	213 Tuft Ave. (4)
480	212 Tuft Ave. (3)
481	208 Tuft Ave. (3)
482	204 Tuft Ave. (3)
483	490 Sorensen Ave. (4)
484	481 Arnaudon Drive (2)
485	471 Arnaudon Drive (2)
486	461 Arnaudon Drive (2)
487	451 Arnaudon Drive (2)
488	440 Arnaudon Drive (2)
489	430 Arnaudon Drive (2)
490	390 Arnaudon Drive (2)
491	360 Arnaudon Drive (2)
492	330 Arnaudon Drive (2)
493	300 Arnaudon Drive (2)
494	280 Arnaudon Drive (2)
495	250 Arnaudon Drive (2)
496	201 Smoot Ave. (3)
497	205 Smoot Ave.(3)
498	209 Smoot Ave.(4)
499	255 Arnaudon Drive (2)
500	285 Arnaudon Drive (2)
501	410 Arnaudon Drive (2)
502	400 Arnaudon Drive (2)



MENDOTA RAD 613012

12 Units (443 - 454)

Constructed 1971

4 Bldgs. w/3 units/bldg.

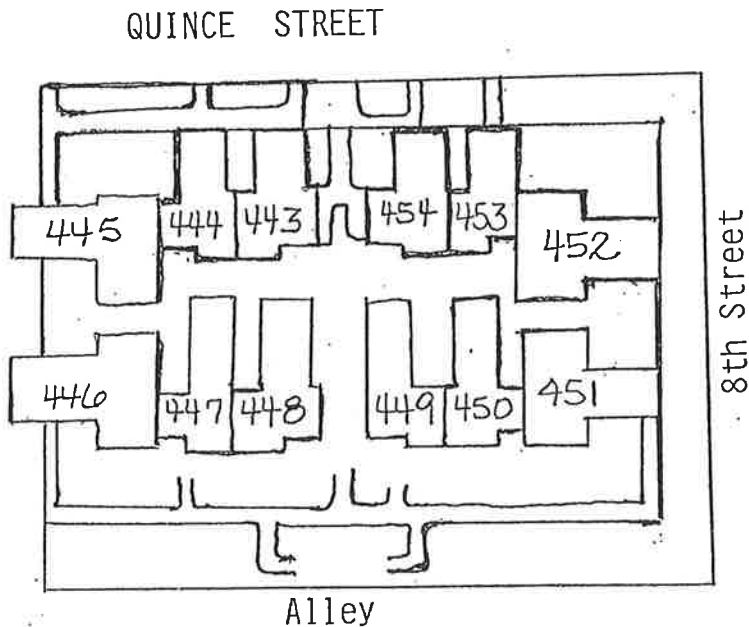
Unit # is the Identifier

Sidewalks - 2,600 Sq. Ft.

Parking Area - 3,300 Sq. Ft.

<u>UNIT</u>	<u>ADDRESS</u>
443	778 Quince, Apt. 1 (0)
444	778 Quince, Apt. 2 (0)
445	778 Quince, Apt. 3 (1)
446	778 Quince, Apt. 4 (1)
447	778 Quince, Apt. 5 (0)
448	778 Quince, Apt. 6 (0)
449	778 Quince, Apt. 7 (0)
450	778 Quince, Apt. 8 (0)
451	778 Quince, Apt. 9 (1)
452	778 Quince, Apt. 10 (1)
453	778 Quince, Apt. 11 (0)
454	778 Quince, Apt. 12 (0)

0 Bdrm.	- 8
1 Bdrm.	- 4
2 Bdrm.	- 0
3 Bdrm.	- 0
4 Bdrm.	- 0



MENDOTA RAD 613012

<u>UNIT</u>	<u>ADDRESS</u>
115	111 Straw Street (4)
116	121 Straw Street (2)
117	131 Straw Street (3)
118	141 Straw Street (3)
119	151 Straw Street (4)
120	161 Straw Street (2)
121	171 Straw Street (3)
122	181 Straw Street (3)
123	191 Straw Street (5)
124	190 Straw Street (4)
125	180 Straw Street (3)
126	170 Straw Street (3)
127	160 Straw Street (4)
128	150 Straw Street (3)
129	140 Straw Street (3)
130	130 B Straw Street (1)
131	130 A Straw Street (1)
132	120 Straw Street (3)
133	110 Straw Street (3)
134	100 Straw Street (4)
135	101 Tuft Street (5)
136	111 Tuft Street (3)
137	121 Tuft Street (3)
138	131 Tuft Street (3)
139	141 Tuft Street (3)
140	151 Tuft Street (4)
141	161 Tuft Street (2)
142	171 Tuft Street (4)
143	181 Tuft Street (2)
144	191 Tuft Street (5)
145	190 Tuft Street (4)
146	180 Tuft Street (4)
147	170 Tuft Street (4)
148	160 Tuft Street (2)
149	150 Tuft Street (4)
150	140 Tuft Street (4)
151	130 Tuft Street (4)
152	120 Tuft Street (2)
153	110 Tuft Street (4)
154	100 Tuft Street (4)

40 Units (115 - 154)
Constructed 1963
14 Bldgs. w/2 units/bldg.
12 Bldgs. w/1 unit/bldg.
Unit # is identifier
Sidewalks - 9,640 Sq. Ft.
Parking Arcas - 12,744 Sq. Ft.

1 Bdrm. - 2
2 Bdrm. - 6
3 Bdrm. - 14
4 Bdrm. - 15
5 Bdrm. - 3

