

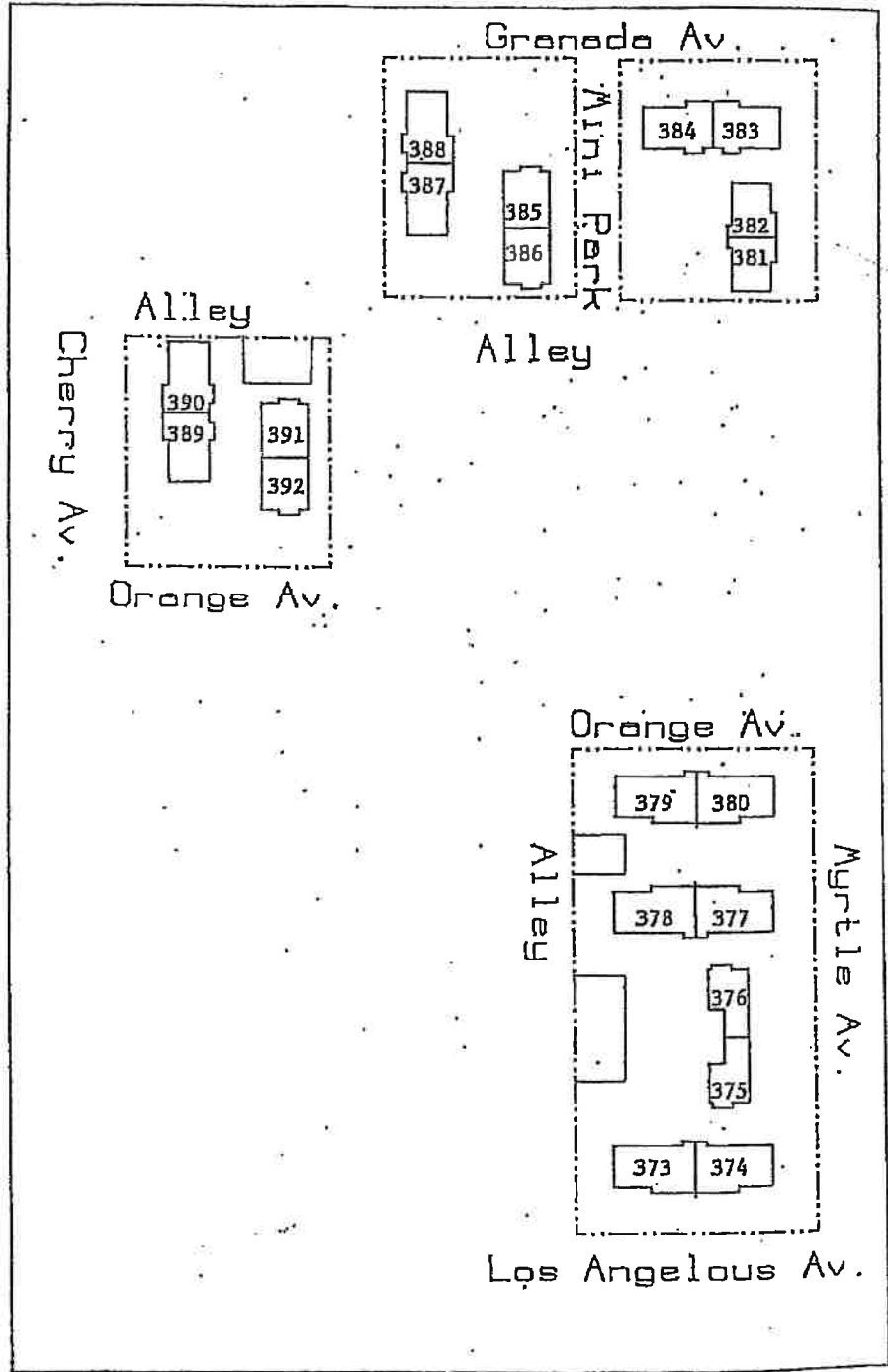
# CAL. 28-23

## Scattered Sites - Huron

20 Units (373 - 392)  
 Constructed 1969  
 10 bldgs. w/2 units/bldg.  
 Unit # is identifier  
 Sidewalks - 7,320 Sq. Ft.  
 Parking Area - 5,130 Sq. Ft.

UNIT	ADDRESS
373	36737 Los Angeles (3)
374	36721 Los Angeles (3)
375	17125 Myrtle Avenue (5)
376	17133 Myrtle Avenue (5)
377	17147 Myrtle Avenue (3)
378	17149 Myrtle Avenue (3)
379	17155 Myrtle Avenue (3)
380	17153 Myrtle Avenue (3)
381	17273 Myrtle Avenue (1)
382	17289 Myrtle Avenue (1)
383	36724 Granada Avenue (2)
384	36736 Granada Avenue (2)
385	36762 Granada Avenue (4)
386	36764 Granada Avenue (4)
387	36774 Granada Avenue (2)
388	36772 Granada Avenue (2)
389	36879 Orange Avenue (2)
390	36881 Orange Avenue (2)
391	36873 Orange Avenue (4)
392	36871 Orange Avenue (4)

1 Bdrm.	- 2
2 Bdrm.	- 6
3 Bdrm.	- 6
4 Bdrm.	- 4
5 Bdrm.	- 2



Building Code No,

#211806

**CAL. 28-06**  
**Cañarez Terrace - Huron**

24 Units (183 - 206)

Constructed 1953

12 bldgs. w/2 units/bldg.

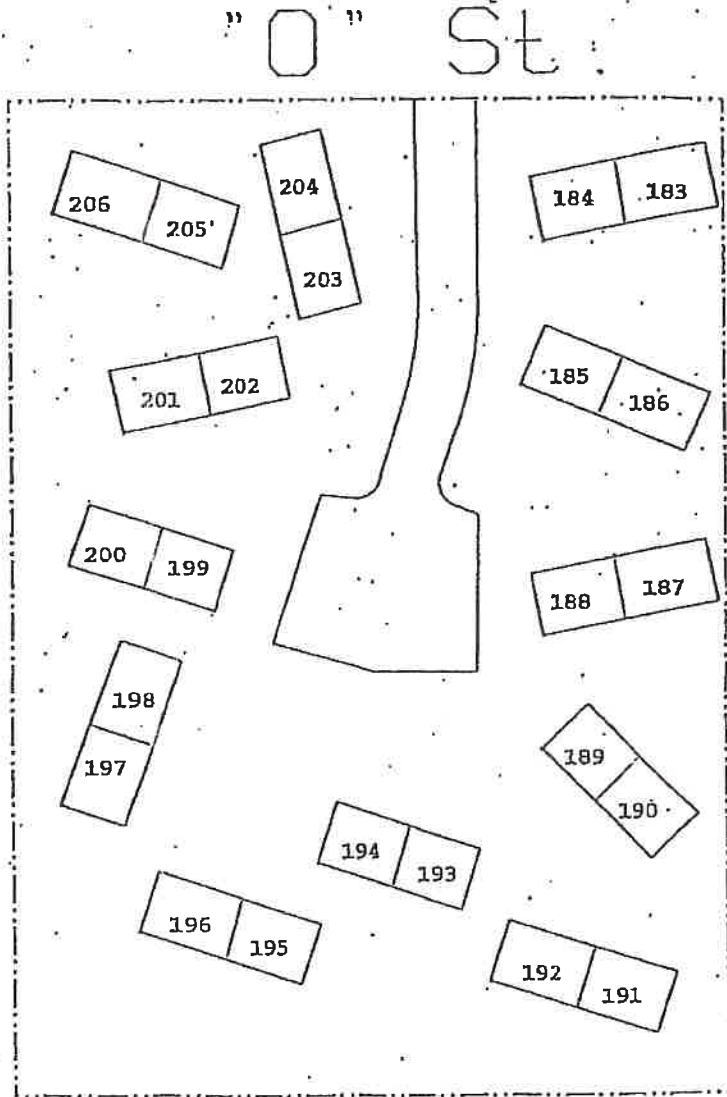
Unit # is the Identifier

Sidewalks - 6,200 Sq. Ft.

Parking Area - 15,000 Sq. Ft.

<u>UNIT</u>	<u>ADDRESS</u>
183	36468 "O" Street, #183 (2)
184	36468 "O" Street, #184 (3)
185	36468 "O" Street, #185 (2)
186	36468 "O" Street, #186 (3)
187	36468 "O" Street, #187 (2)
188	36468 "O" Street, #188 (3)
189	36468 "O" Street, #189 (1)
190	36468 "O" Street, #190 (4)
191	36468 "O" Street, #191 (3)
192	36468 "O" Street, #192 (2)
193	36468 "O" Street, #193 (1)
194	36468 "O" Street, #194 (4)
195	36468 "O" Street, #195 (2)
196	36468 "O" Street, #196 (3)
197	36468 "O" Street, #197 (2)
198	36468 "O" Street, #198 (3)
199	36468 "O" Street, #199 (3)
200	36468 "O" Street, #200 (3)
201	36468 "O" Street, #201 (2)
202	36468 "O" Street, #202 (3)
203	36468 "O" Street, #203 (2)
204	36468 "O" Street, #204 (3)
205	36468 "O" Street, #205 (2)
206	36468 "O" Street, #206 (3)

1 Bdrm. - 2
2 Bdrm. - 9
3 Bdrm. - 11
4 Bdrm. - 2
5 Bdrm. - 0



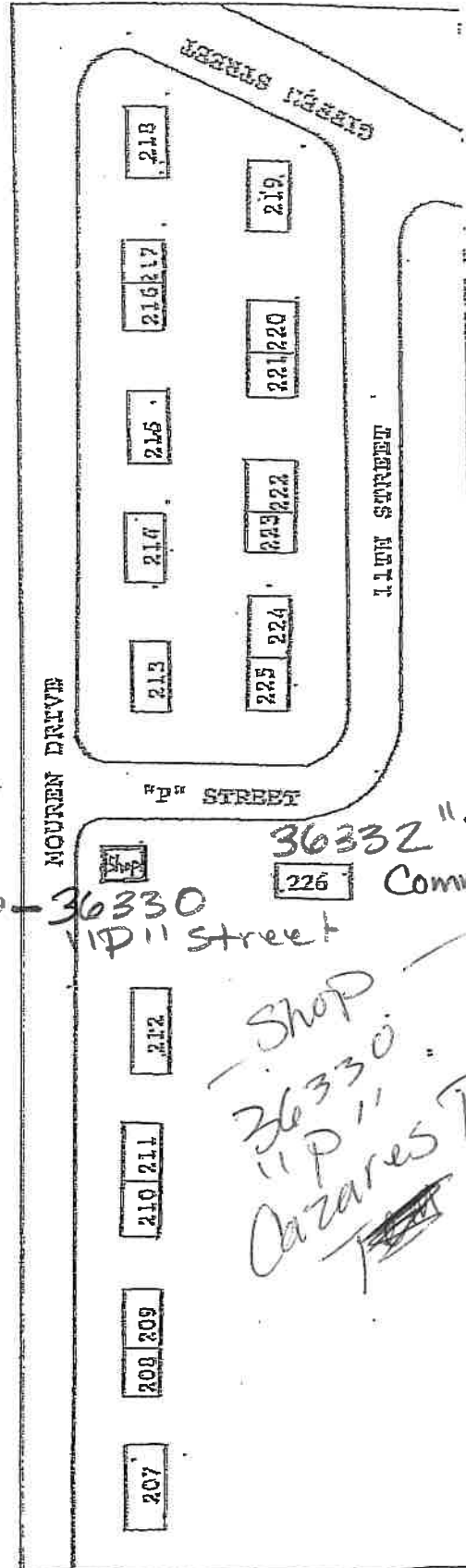
CAL. 28-13  
Casarez Terrace - Huron

(211812)

20 Units (207 - 226)  
Constructed 1963  
8 bldgs. w/1 unit/bldg.  
6 bldgs. w/2 units/bldg.  
1 bldg. - Shop  
Unit # is the Identifier  
Unit 226 - Boys & Girls Club  
Sidewalks - 150 Sq. Ft.  
Parking Area - 13,625 Sq. Ft.

UNIT	ADDRESS
207	36333 Mouren St., 207 (5)
208	36333 Mouren St., 208 (3)
209	36333 Mouren St., 209 (3)
210	36333 Mouren St., 210 (3)
211	36333 Mouren St., 211 (3)
212	36333 Mouren St., 212 (5)
213	36333 Mouren St., 213 (3)
214	36333 Mouren St., 214 (4)
215	36333 Mouren St., 215 (4)
216	36333 Mouren St., 216 (2)
217	36333 Mouren St., 217 (2)
218	36333 Mouren St., 218 (4)
219	36333 11 <sup>th</sup> St., 219 (4)
220	36333 11 <sup>th</sup> St., 220 (3)
221	36333 11 <sup>th</sup> St., 221 (3)
222	36333 11 <sup>th</sup> St., 222 (3)
223	36333 11 <sup>th</sup> St., 223 (3)
224	36333 11 <sup>th</sup> St., 224 (3)
225	36333 11 <sup>th</sup> St., 225 (3)
226	36332 "P" St., 226 (4)

1 Bdrm. - 0
2 Bdrm. - 2
3 Bdrm. - 11
4 Bdrm. - 5
5 Bdrm. - 2



# CAL. CHFA 3028

## Parkside Apartments, Huron

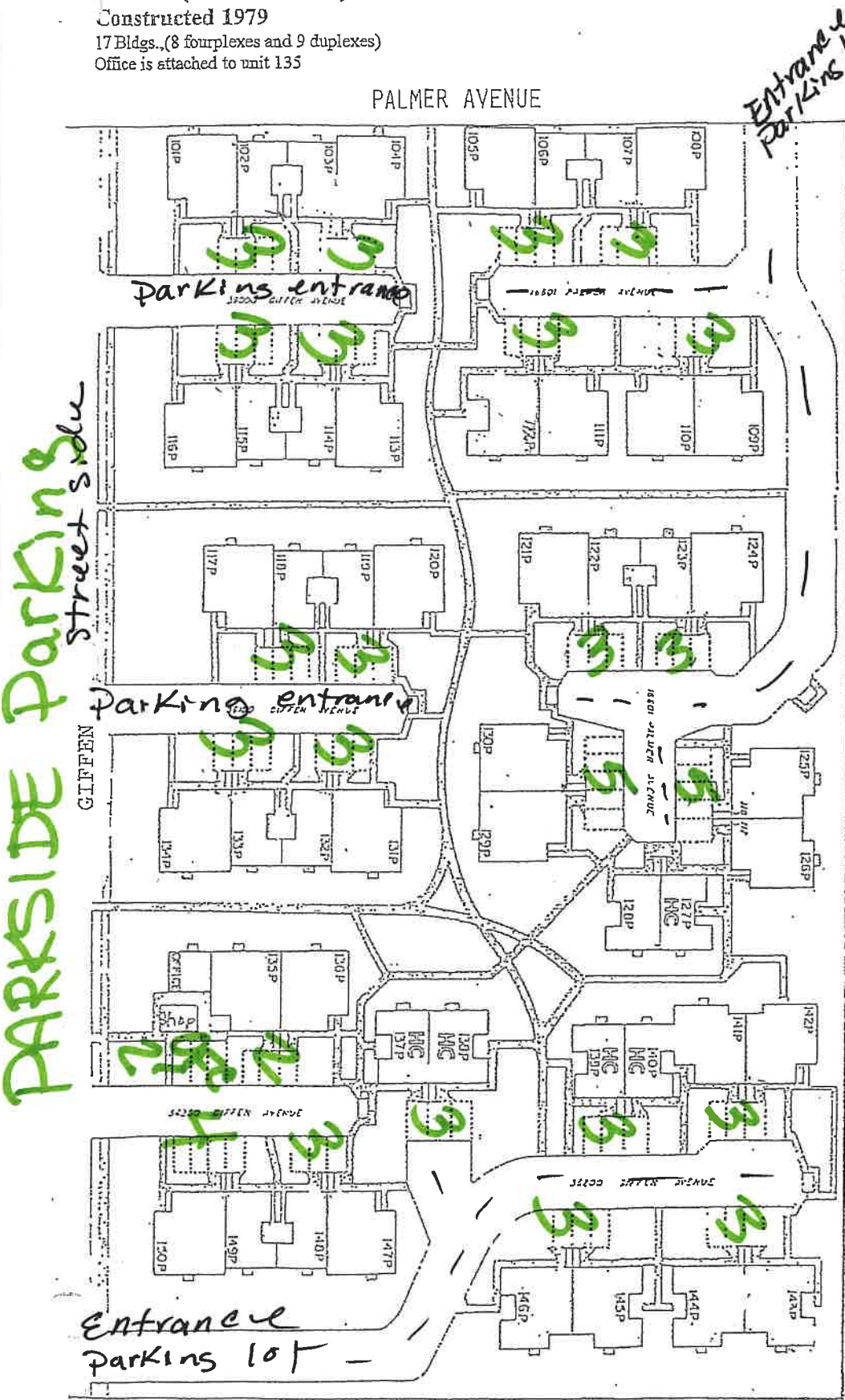
50 Units (Units 101 - 150)

Constructed 1979

17 Bldgs., (8 fourplexes and 9 duplexes)

Office is attached to unit 135

1 Bdrm. - 0	3 Bdrm. - 25	5 Bdrm. - 0
2 Bdrm. - 20	4 Bdrm. - 5	



UNIT	ADDRESS
101	36200 N. Giffen, #101 (3)
102	36200 N. Giffen, #102 (2)
103	36200 N. Giffen, #103 (2)
104	36200 N. Giffen, #104 (3)
105	36200 N. Giffen, #105 (3)
106	36200 N. Giffen, #106 (2)
107	36200 N. Giffen, #107 (2)
108	36200 N. Giffen, #108 (3)
109	36200 N. Giffen, #109 (3)
110	36200 N. Giffen, #110 (3)
111	36200 N. Giffen, #111 (3)
112	36200 N. Giffen, #112 (4)
113	36200 N. Giffen, #113 (3)
114	36200 N. Giffen, #114 (2)
115	36200 N. Giffen, #115 (2)
116	36200 N. Giffen, #116 (3)
117	36200 N. Giffen, #117 (3)
118	36200 N. Giffen, #118 (2)
119	36200 N. Giffen, #119 (2)
120	36200 N. Giffen, #120 (3)
121	36200 N. Giffen, #121 (3)
122	36200 N. Giffen, #122 (2)
123	36200 N. Giffen, #123 (2)
124	36200 N. Giffen, #124 (3)
125	36200 N. Giffen, #125 (3)
126	36200 N. Giffen, #126 (3)
127	36200 N. Giffen, #127 (2) H/C
128	36200 N. Giffen, #128 (2)
129	36200 N. Giffen, #129 (3)
130	36200 N. Giffen, #130 (3)
131	36200 N. Giffen, #131 (3)
132	36200 N. Giffen, #132 (2)
133	36200 N. Giffen, #133 (2)
134	36200 N. Giffen, #134 (3)
135	36200 N. Giffen, #135 (3)
136	36200 N. Giffen, #136 (3)
137	36200 N. Giffen, #137 (2) H/C
138	36200 N. Giffen, #138 (2) H/C
139	36200 N. Giffen, #139 (2) H/C
140	36200 N. Giffen, #140 (2) H/C
141	36200 N. Giffen, #141 (3)
142	36200 N. Giffen, #142 (3)
143	36200 N. Giffen, #143 (4)
144	36200 N. Giffen, #144 (4)
145	36200 N. Giffen, #145 (4)
146	36200 N. Giffen, #146 (4)
147	36200 N. Giffen, #147 (3)
148	36200 N. Giffen, #148 (2)
149	36200 N. Giffen, #149 (2)
150	36200 N. Giffen, #150 (3)

Sidewalks - 17,280 Sq. Ft.  
 Parking Area - 60,000 Sq. Ft.